



**ALASKA DIVISION OF HOMELAND SECURITY &
EMERGENCY MANAGEMENT**



SITUATION REPORT 21-099 • APR 09, 2021

Toll-Free 1.800.478.2337

Anchorage Area 907.428.7000

SEOC 907.428.7100

<p><u>SEOC Preparedness Level</u></p> <p>Heightened Awareness – Response to COVID-19 and Recovery from December Southeast Storms</p>	<p>http://ready.alaska.gov</p>	<p><u>National Terrorism Advisory System:</u></p> <p>View this site for the latest NTAS bulletin: read the current NTAS Bulletin here.</p>
<p><u>Maritime Security (MARSEC)</u></p> <p>Level:1-Minimum Appropriate Security Measures</p>	<p>WHO Novel Coronavirus Pandemic (COVID-19):</p> <p>2019 Novel Coronavirus</p>	<p><u>Alaska Military Installation Force Protection Level:</u> FPCON Bravo</p>

(Significant changes from previous situation reports are in red.)

THREAT LEVEL CHANGES:

None

Significant Issues:

Coronavirus (COVID-19) Pandemic:

A unified command has been established at the SEOC. The SEOC continues to support statewide response to COVID-19.

State of Alaska Department of Health and Social Services (DHSS)

DHSS is operating as the Medical Branch under the State EOC/Unified Command.

For more information about the outbreak refer to:

<https://covid19.alaska.gov/>

<https://www.cdc.gov/coronavirus/2019-ncov/index.html>

The Alaska DHSS website is located at <http://dhss.alaska.gov/Pages/default.aspx>

NTAS BULLETIN

The United States Department of Homeland Security has issued a National Terrorism Advisory System Bulletin effective January 27, 2021 for a heightened threat environment across the United States.

Read the bulletin here: https://www.dhs.gov/sites/default/files/ntas/alerts/21_0127_ntas-bulletin.pdf

Travel Alerts and Conditions

COVID-19 Health Advisories may affect travel. Check <https://covid19.alaska.gov/> for current advisories.

For current driving conditions dial 511 or link to <http://511.alaska.gov/>

Barry Arm Landslide / Tsunami Risk

For the latest information on the Barry Arm Landslide and Tsunami risk, click here:

[DGGS Barry Arm Landslide and Tsunami Hazard](#)

Recent Earthquakes

USGS Earthquake Information: <http://earthquake.usgs.gov/>

National Tsunami Warning Center: <http://tsunami.gov/>

Alaska Volcanoes

Cleveland Alert Level: **Advisory** and Aviation Color Code: **Yellow**

Semisopchnoi Alert Level: **Watch** and Aviation Color Code: **Orange**

Veniaminof Alert Level: **Watch** and Aviation Color Code: **Orange**

For Alaska Volcano updates, go to: <https://www.avo.alaska.edu/>

Air Quality Index (AQI) Advisories

For the most up to date Air Quality Index Advisories:

<http://dec.alaska.gov/Applications/Air/airtoolsweb/Home/Index>

Avalanche Forecast:

Check the Avalanche Forecast Center closest to your area for the most up to date information on Avalanche potential. <https://alaskasnow.org/> or <https://www.weather.gov/afc/avalanche>

Spills of Oil and Hazardous Substances

The ADEC Spill Prevention and Response page is located at:

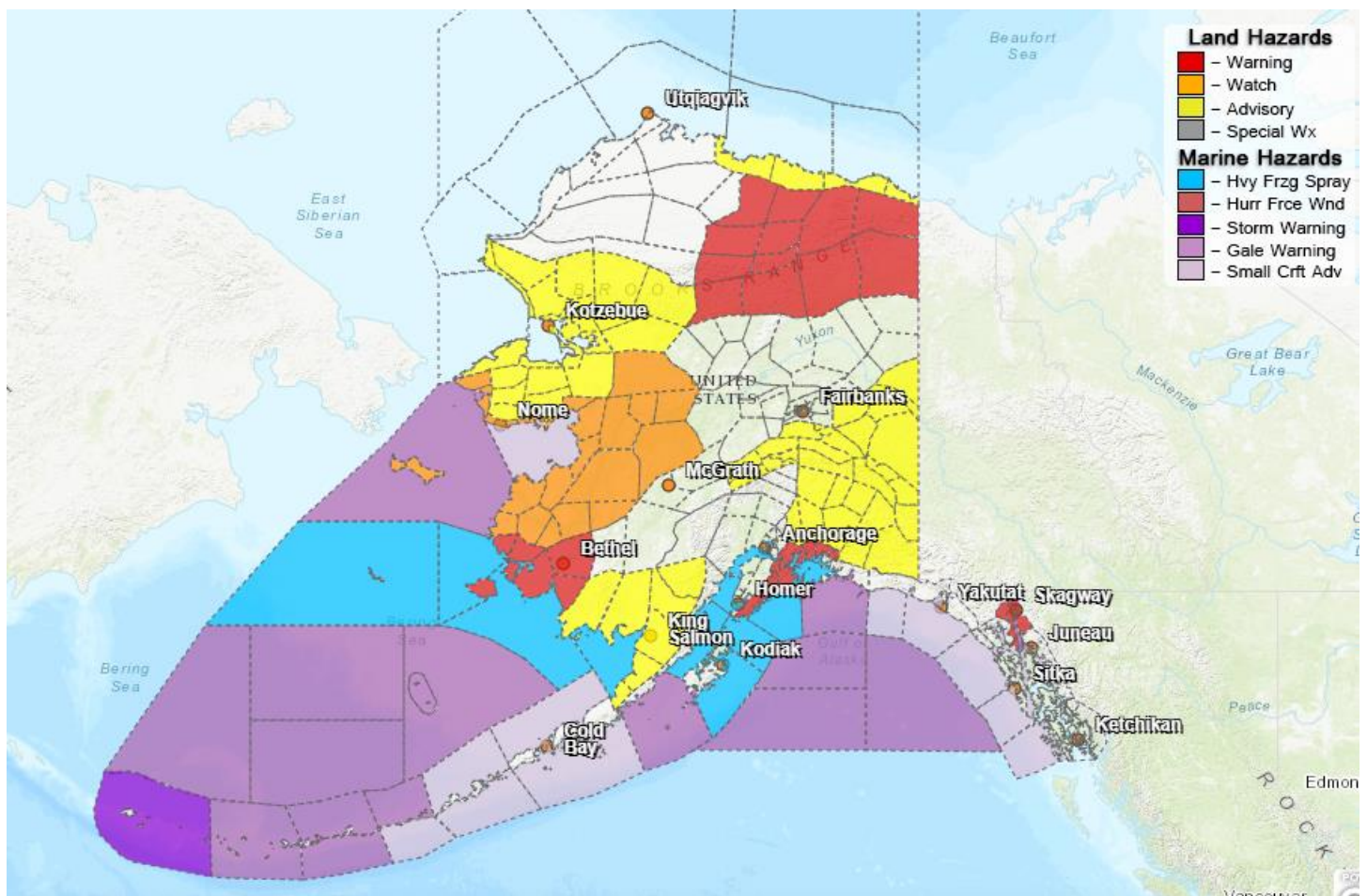
<http://dec.alaska.gov/spar/ppr/spill-information/response/>

Alaska Cyber Security Information

State Employees may sign up for cybersecurity notifications and alerts at

<https://oit.alaska.gov/Security>

Significant Weather:



A Blizzard Warning is in effect for the Pribilof Islands until 10:00 A.M. today and until 7:00 A.M. tomorrow for the Kuskokwim Delta.

A High Wind Warning is in effect for the Prince William Sound, including Seward and Valdez until 1:00 P.M. today. Wind gusts of up to 75mph are possible in Valdez this morning.

A Winter Storm Watch is in effect until 6:00 P.M. Sunday for St Lawrence Island, the Bering Strait Coast, Yukon Delta, Yukon Valley, Eastern Norton Sound, Nulato Hills, Southern Seward Peninsula Coast and the Lower Koyukuk Valley.

Wind Chill Advisories and Warnings are in effect until noon today for the Copper River Basin, Deltana and Tanana Flats, Chukchi Sea Coast, Baldwin Peninsula and Selawik Valley, Lower Kobuk and Noatak Valleys, Upper Kobuk and Noatak Valleys, Beaufort Sea Coast and the Northeastern Brooks Range

Winter Weather Advisories are in effect for the following areas:

- Bristol Bay until 7:00 A.M. tomorrow for 3 to 5 inches of snow accumulation and high winds.
- Upper Tanana Valley, Denali and the Eastern Alaska Range for blowing snow, high winds and low wind chill values.

For more information and the most current weather, Watches / Warnings / Advisories go to:

<http://www.weather.gov/arh>

The Next Situation Report: will be 12 April 2021. A significant change in the situation or the threat level will prompt an interim report.

This report is posted on the internet at <https://ready.alaska.gov/sitrep>. To register for email distribution, go to <http://list.state.ak.us/mailman/listinfo/dhsem.situation.report>. Direct questions regarding this report to the SEOC at 907-428-7100 or seoc@alaska.gov